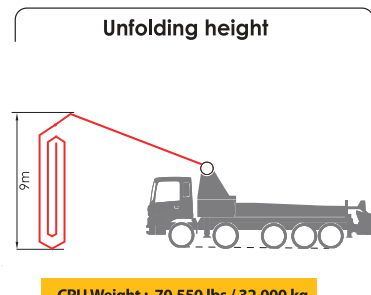
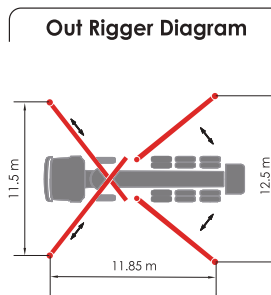
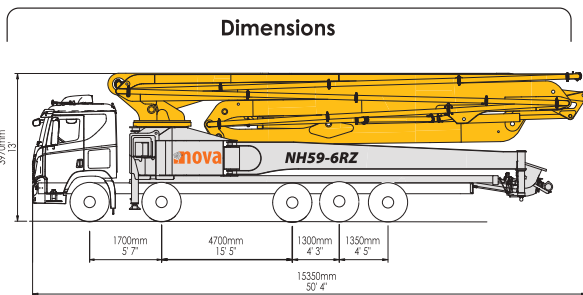


MODEL NH59-6RZ



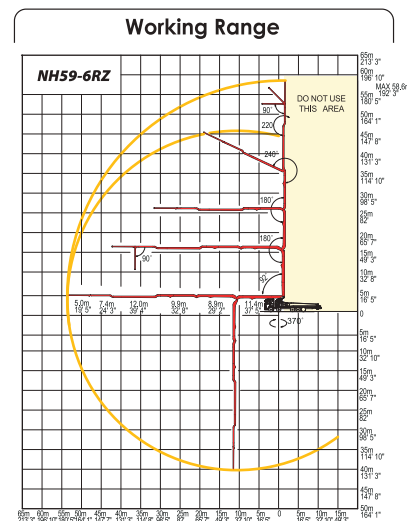
CPU Weight : 70,550 lbs / 32,000 kg

Boom Specification

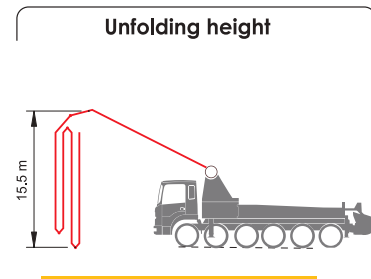
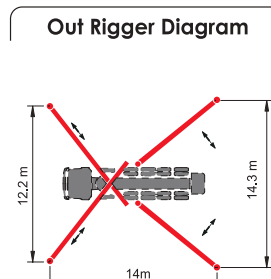
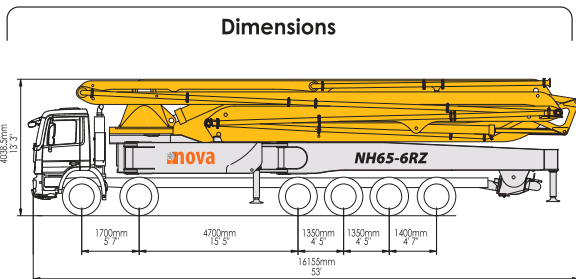
Spec	U.S.	Metric
Number of Booms	6 Sections	
Folding Type	RZ Folding	
Vertical Reach	192' 3"	58.6 m
Horizontal Reach	179' 2"	54.6 m
Reach Depth	131' 10"	40.2 m
Unfolding Height	29' 6"	9.0 m
Section Articulation	92°/180°/180°/240°/220°/90°	
Rotation	370°	
Delivery Line	5"	125 mm
Proportional Boom	Yes	
End Hose Length	13' 2"	4.0 m
Out Rigger Spread - Front	37' 9"	11.5 m
Out Rigger Spread - Rear	41'	12.5 m

Pump Specification

Spec	U.S.	Metric
Maximum Output	235.4 yd ³ /h	180 m ³ /h
Concrete Pressure	1261 psi	87 bar
Stroke Per Min.	34	
Delivery Cylinder	Ø 9"	Ø 230
Stroke Length	6' 11"	2100 mm
S-Valve	Ø9" x Ø7"	Ø230 x Ø180 mm
Hydraulic System Pressure	5076 psi	350 bar
Hydraulic Pump	Rexroth A11VLO190 x 2	
Switching Type	Hydraulic	
Hopper Capacity	21.2 ft ³	600 liter
Max. Aggregate Size	1.6"	40 mm
Water Pump Pressure	290 psi	20 bar
Water Tank Capacity	17.7 ft ³	500 liter



MODEL NH65-6RZ



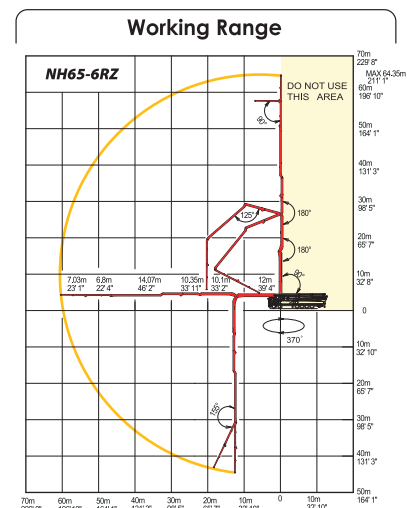
CPU Weight : 94,800 lbs / 43,000 kg

Boom Specification

Spec	U.S.	Metric
Number of Booms	6 Sections	
Folding Type	RZ Folding	
Vertical Reach	210' 11"	64.3 m
Horizontal Reach	197' 10"	60.3 m
Reach Depth	147' 8"	45.0 m
Unfolding Height	50' 10"	15.5 m
Section Articulation	90°/180°/180°/235°/180°/90°	
Rotation	370°	
Delivery Line	5"	125 mm
Proportional Boom	Yes	
End Hose Length	13' 2"	4.0 m
Out Rigger Spread - Front	40'	12.2 m
Out Rigger Spread - Rear	46' 10"	14.3 m

Pump Specification

Spec	U.S.	Metric
Maximum Output	235.4 yd ³ /h	180 m ³ /h
Concrete Pressure	1261 psi	87 bar
Stroke Per Min.	34	
Delivery Cylinder	Ø 9"	Ø 230
Stroke Length	6' 11"	2100 mm
S-Valve	Ø9" x Ø7"	Ø230 x Ø180 mm
Hydraulic System Pressure	5076 psi	350 bar
Hydraulic Pump	Rexroth A11VLO190 x 2	
Switching Type	Hydraulic	
Hopper Capacity	21.2 ft ³	600 liter
Max. Aggregate Size	1.6"	40 mm
Water Pump Pressure	290 psi	20 bar
Water Tank Capacity	17.7 ft ³	500 liter



Dimensions and weights of drawings will vary with different chassis models, specifications and local or national regulations. Any specific options, please contact info@novaintl.ca